



**South Metro Junior Football League (SMJFL)
COACHING ACCREDITATION POLICY**

POLICY NAME	Coaching Accreditation Policy
DATE OF ISSUE	14/03/2018
POLICY COVERAGE	This policy applies to all relevant SMJFL members
DATE OF REVIEW	Annually
CONTROLLING BODY	SMJFL

1. INTRODUCTION

- 1.1. For the purpose of this policy, SMJFL Members means: SMJFL Member Clubs, staff, coaches, officials, players and any other volunteers.
- 1.2. Recently the AFL has undertaken a review of all its coach education programs, including the reaccreditation process and regional coach support.
- 1.3. The AFL have developed a centralised Coach.AFL learning management system which includes a national membership database, high quality interactive coach resources, online coach education courses for all levels of coaching and a number of member benefits. Coach.AFL will be an exclusive resource centre providing a range of learning opportunities for all AFL accredited coaches.

2. PURPOSE

- 2.1. This policy provides a detailed outline of the South Metro Junior Football League's (**SMJFL**) requirement for all SMJFL coaches to obtain and hold a coaching accreditation to be qualified to perform the role of a Coach or Assistant Coach at an SMJFL member club.
- 2.2. The aim of the SMJFL Coaching Accreditation Policy is to ensure there is a shared understanding amongst all SMJFL members of the SMJFL's expectations regarding all coaching accreditations.

3. SCOPE

- 3.1. This policy applies to all SMJFL Members or any individual holding a position as Coach or Assistant Coach at an SMJFL member club.
- 3.2. If an SMJFL member is unsure if the following policy is applicable, they should direct any enquiries to their member club.

4. COACHING ACCREDITATIONS

4.1. New Coaches

All SMJFL members undertaking a coaching accreditation for the first time will be required to complete the following compulsory requirements to be recognised as an accredited coach;

- Create a profile on Coach.AFL and complete contact details
- Payment of annual fee of \$49.50
- Accept and agree to the Coach's Code of Conduct (Annual acceptance required)
- Complete online Foundation Course specific to the age of the playing group (senior, youth or junior)
- Attend a Face-to-Face foundation workshop (\$60)

First Year of Coaching	Compulsory Component	Points when Completed
Online Component	<input checked="" type="checkbox"/>	TBC
Workshop Attendance	<input checked="" type="checkbox"/>	TBC
Previous Year of Coaching	N/A	0
	Overall Points	TBC
	Points Required to Coach the following season	TBC

4.2. Reaccrediting Coaches (recently expired accreditation)

All SMJFL members who are an existing coach with a recently expired accreditation (end of previous year) will be required to reaccredit by completing the following compulsory requirements to be recognised as an accredited coach;

- Create a profile on Coach.AFL and complete contact details
- Payment of annual fee of \$49.50
- Accept and agree to the Coach's Code of Conduct (Annual acceptance required)
- Complete online concussion refresher course
- Attend a Face-to-Face foundation workshop (\$60) **[optional]**

Note: Existing coaches can still attend Face-to-Face foundation workshops, but these won't be compulsory, but once completed will contribute points to a coaches' eligibility to reaccredit for the following season.

Existing Coach (Expired Accreditation)	Compulsory	Points when Completed
Concussion Refresher	<input checked="" type="checkbox"/>	TBC
Workshop Attendance	<input checked="" type="checkbox"/> / Optional	TBC
Previous Year of Coaching	<input checked="" type="checkbox"/> / Optional	TBC
	Overall Points	TBC
	Points Required to Coach the following season	TBC

4.3. Existing Coaches (current accreditation valid)

All SMJFL members who are an existing coach with 1, 2 or 3 years left on their accreditation will be required to complete the following compulsory requirements to be recognised as an accredited coach;

- Create a profile on Coach.AFL and complete contact details
- No payment required
- Accept and agree to the Coach's Code of Conduct (Annual acceptance required)
- Complete online concussion refresher course
- Attend a Face-to-Face foundation workshop (\$60) **[optional]**

Note: All coaches are encouraged to attend workshops, seminars, forums etc. and these won't be compulsory but are important for coaching development.

Existing Coach (Current Accreditation Valid)	Compulsory	Points when Completed
Concussion refresher	<input checked="" type="checkbox"/>	TBC
Workshop Attendance	<input checked="" type="checkbox"/> / Optional	TBC
Previous Year of Coaching	<input checked="" type="checkbox"/> / Optional	TBC
	Overall Points	TBC
	Points Required to Coach the following season	TBC

- 4.3.1 All existing coaches whose current accreditations are valid until the end of 2018, 2019 and 2020 will not need to complete an AFL prescribed online education module for reaccreditation until their current qualification expires.

4.4. **Reaccreditation process for all coaches from 2018 onwards**

- 4.4.1 A feature of the annual reaccreditation process will be the requirement of each coach to attain a number of points each year to be eligible for accreditation renewal – these points will be attained through a variety of means including coaching a team, completing short courses on the Coach.AFL Learning Management System, attending national conferences, regional seminars/workshops etc.
- 4.4.2 All new coaches and existing coaches of SMJFL Member clubs (once their qualification expires) will need to comply with the SMJFL compulsory requirements set out in 4.2 to be recognised as an accredited coach.

4.5. **Junior and Youth Coaching Accreditations**

- 4.5.1. Junior coaching accreditations are compulsory for the following individuals in a coaching role;
 - 4.5.1.1. All coaches for teams U8 – U12;
 - 4.5.1.2. All assistant coaches for teams U11 – U12 (including under 12 girls).
- 4.5.2. Youth coaching accreditations are compulsory for an individual acting in roles;
 - 4.5.2.1. All coaches for teams U13+;
 - 4.5.2.2. All assistant coaches for teams U13+.
- 4.5.3. New coaches who will be coaching both Junior (U8 – U12) teams and Youth (U13+) teams will need to complete both Junior and Youth Foundation online courses and attend both Junior and Youth workshops.
 - 4.5.3.1. Existing Coaches (Clauses 4.2 & 4.3) will only need to complete the relevant online courses and concussion refresher courses.
- 4.5.4. New Assistant Coaches who will be coaching both Junior (U11 – U12) teams and Youth (U13+) teams will need to complete both Junior and Youth Foundation online courses and attend both Junior and Youth workshops
 - 4.5.4.1. Existing Assistant Coaches (Clauses 4.2 & 4.3) will only need to complete the relevant online courses and concussion refresher courses.

5. **RELATED DOCUMENTS & LEGISLATIVE REQUIREMENTS**

- 5.1. This policy must be read in conjunction with:
 - 5.1.1 SMJFL documentation including but not limited to:
 - 5.1.1.1 [SMJFL By-Laws](#)
 - 5.1.2 AFL communication including but not limited to:
 - 5.1.2.1 [National Coaching Strategy](#)
 - 5.1.2.2 [Coaching Portal Launch](#)

6. **POLICY BREACHES**

- 6.1. Any breaches of this policy are subject to but not limited to the SMJFL Disciplinary Policy and the affiliated SMJFL Member Club may be penalised.
- 6.2. The Chief Executive Officer has authority to determine the severity of the breach and discipline as they see fit.

7. REVIEW PROCESS

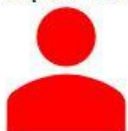
- 7.1. This policy will be reviewed by the SMJFL Board on an annual basis.
- 7.2. SMJFL Members can provide feedback or suggestions to improve this policy by contacting the SMJFL CEO.

APPENDIX A – COACHING ACCREDITATION

The following image outlines the Coaches identified in 4.1, 4.2 and 4.3 and provides a visual description of the SMJFL and the AFL's requirements for a coach to be accredited.

CATEGORY 1 NEW COACHES

(Accrediting for first time
OR accreditation expired 31/12/2016 or prior)



COMPULSORY

- Online profile on portal
- Payment of annual fee (\$49.50)
- Accept Coach's Code of Conduct
- Online Foundation course
- **Attend face to face Workshop (\$60)**

OPTIONAL

- Further online courses for coach development

CATEGORY 2 REACCREDITING COACHES

(Recently Expired Accreditation 31/12/2017 ONLY)



COMPULSORY

- Online profile on portal
- Payment of annual fee (\$49.50)
- Accept Coach's Code of Conduct
- Online concussion refresher course

OPTIONAL

- Attend face to face Workshop
- Further online courses for coach development

CATEGORY 3 EXISTING COACHES

(Current Accreditation Valid)



COMPULSORY

- Online profile on portal
- NO Payment required
- Accept Coach's Code of Conduct
- Online concussion refresher course

OPTIONAL

- Attend face to face Workshop
- Further online courses for coach development

Please note: As stated in this Policy, the SMJFL have made it compulsory that all new coaches need to attend a Face to Face Workshop to complete their Coaching Accreditation.